



# Ola CT 45 Coffee Table

design Paolo Vernier, 2016

Ola coffee table with legs and top in lacquered steel or with industrial effect. Suitable for outdoor use.



## Colors and Materials

### Structure



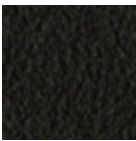
White steel



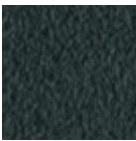
Black steel



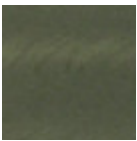
Sand steel



Brown steel



Grafite steel



Industrial steel

1 color

### Coating



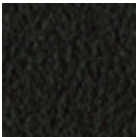
White steel



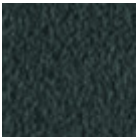
Black steel



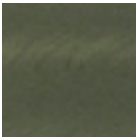
Sand steel



Brown steel



Grafite steel



Industrial steel

1 color

## Dimensions



	A (cm)	B (cm)	C (cm)
	(inch)	(inch)	(inch)
Ola CT 45	45	45	47
(cm)	17.7	17.7	18.5
(inch)			

## Volumetric Details

Weight 6 Kg  
Volume 0.11 mc  
Package 1



# Ola CT 105 Coffee Table

design Paolo Vernier, 2016

Ola coffee table with legs and top in lacquered steel or with industrial effect. Suitable for outdoor use.



## Colors and Materials

### Structure



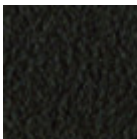
White steel



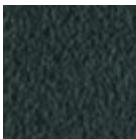
Black steel



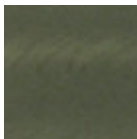
Sand steel



Brown steel



Grafite steel



Industrial steel

1 color

### Coating



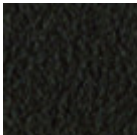
White steel



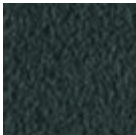
Black steel



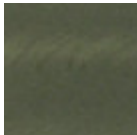
Sand steel



Brown steel



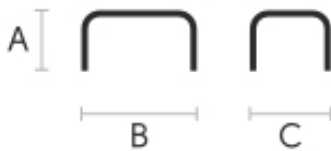
Grafite steel



Industrial steel

1 color

## Dimensions



	A (cm)	B (cm)	C (cm)
	(inch)	(inch)	(inch)
Ola CT			
105 (cm)	45	105	47
(inch)	17.7	41.3	18.5

## Volumetric Details

Weight 10 Kg  
Volume 0.24 mc  
Package 1

---

# Downloads

.3ds Ola CT 105 (zip) - <https://www.midj.com/images/uploads/resources/3d-midj-ola-ct-105-3ds.zip>