



Lea Table

design Paolo Vernier, 2019

Lea fixed table with four legs base. Barrel top in ceramic or wood.

Italian elegance and conviviality are enclosed in the finely refined shape of the Lea table. The thin lines, the contemporary appeal and the attention to every detail tell of a timeless design, to furnish timeless spaces in a mix of aesthetics and functionality.



Colors and Materials

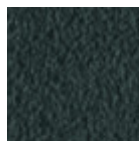
Structure



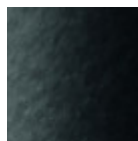
White steel



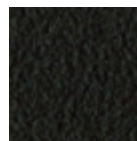
Sand steel



Grafite steel



Black steel



Brown steel

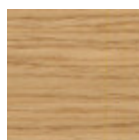
Coating



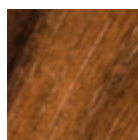
Black lacquered
veneered wood



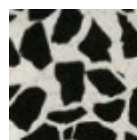
White lacquered
veneered wood



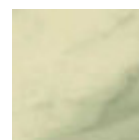
Veneered wood
natural oak finish



Veneered flamed
walnut

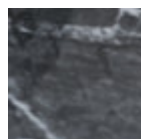


Venetian glossy
ceramic

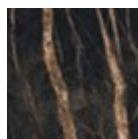


Ceramic with effect
calacatta marble

1 color

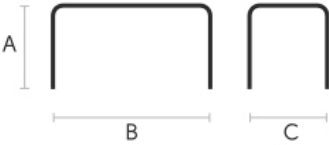


Black greek glossy
marble ceramic



Noir desir glossy
ceramic marble

Dimensions



Volumetric Details

Weight 100 Kg

Volume 0.35 mc

Package 2

	A (cm) (inch)	B (cm) (inch)	C (cm) (inch)
190x115 (cm) (inch)	75 29.5	190 74.8	115 45.3
220x12 (cm) (inch)	75 29.5	220 86.6	120 47.2

Downloads

- .3ds Table Lea 190x115 (zip) - <https://www.midj.com/images/uploads/resources/3d-lea-tavolo190x115-3ds.zip>
- .dxf Table Lea 190x115 (zip) - <https://www.midj.com/images/uploads/resources/3d-lea-tavolo190x115-dxf.zip>
- .dwg Table Lea 190x115 (zip) - <https://www.midj.com/images/uploads/resources/3d-lea-tavolo190x115-dwg.zip>
- .obj Table Lea 190x115 (zip) - <https://www.midj.com/images/uploads/resources/3d-lea-tavolo190x115-obj.zip>
- .fbx Table Lea 190x115 (zip) - <https://www.midj.com/images/uploads/resources/3d-lea-tavolo190x115-fbx.zip>
- .3ds Table Lea 220x120 (zip) - <https://www.midj.com/images/uploads/resources/3d-lea-tavolo220x120-3ds.zip>
- .dwg Table Lea 220x120 (zip) - <https://www.midj.com/images/uploads/resources/3d-lea-tavolo220x120-dwg.zip>
- .dxf Table Lea 220x120 (zip) - <https://www.midj.com/images/uploads/resources/3d-lea-tavolo220x120-dxf.zip>
- .obj Table Lea 220x120 (zip) - <https://www.midj.com/images/uploads/resources/3d-lea-tavolo220x120-obj.zip>
- .fbx Table Lea 220x120 (zip) - <https://www.midj.com/images/uploads/resources/3d-lea-tavolo220x120-fbx.zip>



Lea CT-L Coffee Table

design Paolo Vernier, 2019



Lea coffee table with four legs base in lacquered steel. Top in wood or ceramic.

The Lea coffee table is available in three different sizes and is suitable for overlapping games. Pure and essential in shape, the Lea coffee table is perfect alone or in the original compositions of interlocking tops. Different sizes and materials create a versatile furniture solution, capable of adapting to every need and interior style.

Colors and Materials

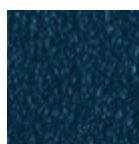
Coating



Light blue steel



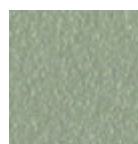
White steel



Ocean blue steel



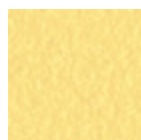
Bronze Steel



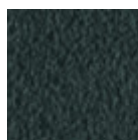
Sand steel



Fango steel



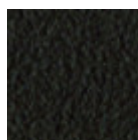
Pastel yellow steel



Grafite steel



Light grey steel



Brown steel



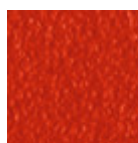
Black steel



Ocher steel



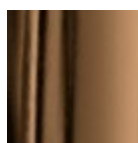
Facepowder pink steel



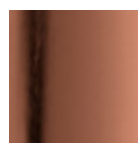
Red steel



Sage green steel



Golden bronze

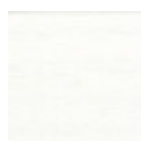


Pink Gold

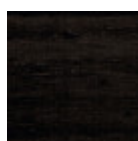


Black Nickel

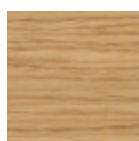
Extensions



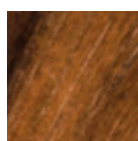
White lacquered veneered wood



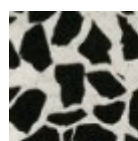
Black lacquered veneered wood



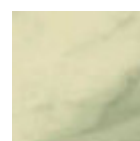
Veneered wood natural oak finish



Veneered flamed walnut

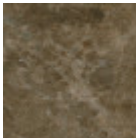


Venetian glossy ceramic

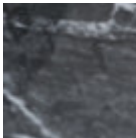


Ceramic with effect calacatta marble

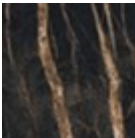
1 color



Emperador marble
ceramic



Black greek glossy
marble ceramic



Noir desir glossy
ceramic marble



Lead ceramic



Charcoal savoia
ceramic



Cement Savoia
Ceramic

Dimensions



	A (cm) (inch)	B (cm) (inch)	C (cm) (inch)
CT-L (cm) (inch)	34 13.4	108 42.5	39 15.4
CT-M (cm) (inch)	40 15.7	65 25.6	45 17.7
CT-S (cm) (inch)	40 15.7	51 20.1	51 20.1

Volumetric Details

Weight 12.5 Kg
Volume 0.16 mc
Package 1



Lea CT-S Coffee Table

design Paolo Vernier, 2019

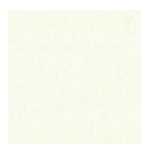


Lea coffee table with four legs base in lacquered steel. Top in wood or ceramic.

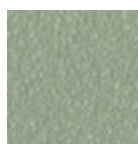
The Lea coffee table is available in three different sizes and is suitable for overlapping games. Pure and essential in shape, the Lea coffee table is perfect alone or in the original compositions of interlocking tops. Different sizes and materials create a versatile furniture solution, capable of adapting to every need and interior style.

Colors and Materials

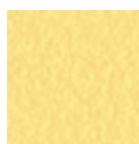
Structure



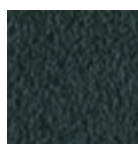
White steel



Sand steel



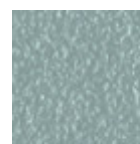
Pastel yellow steel



Grafite steel



Black steel



Light blue steel



Ocean blue steel



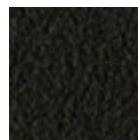
Bronze Steel



Fango steel



Light grey steel



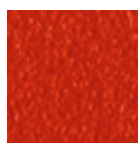
Brown steel



Ocher steel



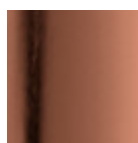
Facepowder pink steel



Red steel



Sage green steel



Pink Gold

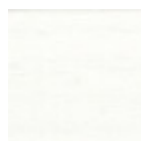


Black Nickel

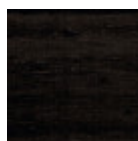


Golden bronze

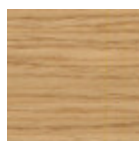
Coating



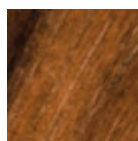
White lacquered veneered wood



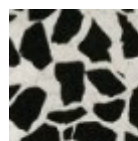
Black lacquered veneered wood



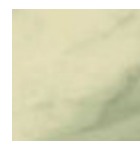
Veneered wood natural oak finish



Veneered flamed walnut

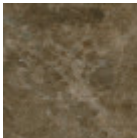


Venetian glossy ceramic

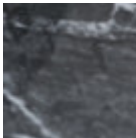


Ceramic with effect calacatta marble

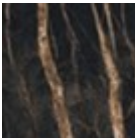
1 color



Emperador marble ceramic



Black greek glossy marble ceramic



Noir desir glossy ceramic marble



Lead ceramic



Charcoal savoia ceramic



Cement Savoia Ceramic

Dimensions



	A (cm) (inch)	B (cm) (inch)	C (cm) (inch)
CT-S (cm) (inch)	40 15.7	51 20.1	51 20.1
CT-M (cm) (inch)	40 15.7	65 25.6	45 17.7
CT-L (cm) (inch)	34 13.4	108 42.5	39 15.4

Volumetric Details

Weight 8.5 Kg
Volume 0.10 mc
Package 1

Downloads

- .dae [Lea CT-S \(zip\)](#) - <https://www.midj.com/images/uploads/resources/3d-midj-lea-ct-s-dae.zip>
- .dxf [Lea CT-S \(zip\)](#) - <https://www.midj.com/images/uploads/resources/3d-midj-lea-ct-s-dxf.zip>
- .obj [Lea CT-S \(zip\)](#) - <https://www.midj.com/images/uploads/resources/3d-midj-lea-ct-s-obj.zip>
- .stl [Lea CT-S \(zip\)](#) - <https://www.midj.com/images/uploads/resources/3d-midj-lea-ct-s-stl.zip>
- .3ds [Lea CT-S \(zip\)](#) - <https://www.midj.com/images/uploads/resources/3d-midj-lea-ct-s-3ds.zip>