

Guapa AP M CU Armchair

design Sempere#Poli Design, 2014

Lounge armchair with sled base. Structure available in lacquered steel or in chrome. Seat and backrest are in hide.



Colors and Materials

Structure



White Steel



Black Steel



Sand Steel



Brown Steel



Grafite Steel



Fango Steel



Bronze Steel



Pastel Yellow Steel



Ocher Steel



Red steel



Sage Green Steel



Light blue steel



Ocean Blue Steel



Light Grey Steel

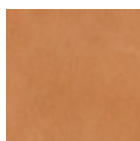


Facepowder Pink Steel



Chrome

Coating



Tuscan Hide
3 Colors



TK Hide
9 Colors

Dimensions

Volumetric Details

Weight 13.5 Kg

Volume 0.46 mc

Package 1

Image not found or type unknown

	cm	inch
A	82	32.3
B	81	31.9
C	62	24.4
D	41	16.1
E	56	22

Downloads

[.3ds Guapa AP M CU \(zip\)](https://www.midj.com/images/uploads/resources/3d-midj-guapa-ap-m-cu-3ds.zip) - <https://www.midj.com/images/uploads/resources/3d-midj-guapa-ap-m-cu-3ds.zip>

Materials Certifications

Tuscan Hide

Tuscan Hide does not fear to get aged since the oldest it gets the more unique it becomes.

It is a material deriving from animal's leather which suffer a process called "vegetable tanning" with natural tannins and with the help of some products biologically compatible whether for the dyeing or for the finishing.

Any possible imperfection, sign, scar, stain of the Tuscan hide surface are a natural characteristics which guarantees its originality.

Materials Certifications

TK Hide

PROPRIETIES AND ADVANTAGES

The hide is a hygienic and very practical product: it resists to wear, it's impermeable to water but, at the same time, the hide wicks air and sweat. The hide is obtained from the skin of bovines breeds and slaughtered for food purposes and subsequently treated with chromium salts.

CLEANING INSTRUCTIONS

Use only a damp, non abrasive cloth; do not use products containing solvents or alcohol that may damage the surface. It is advisable to test an invisible area of the product before cleaning it all. For good preservation of the product purchased, it is unadvisable to expose it to direct sunlight that may alter its features and colours. Any surface imperfections are natural features of hide and guarantee that it is an original product.



Guapa P M CU Armchair

design Sempere#Poli Design, 2014

Armchair with sled base. Structure available in lacquered, chrome, pink gold or black nickel steel. Seat and backrest are in hide.



Colors and Materials

Structure



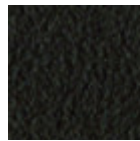
White Steel



Black Steel



Sand Steel



Brown Steel

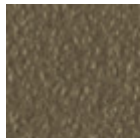


Grafite Steel

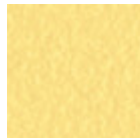


Industrial Steel

1 color



Fango Steel



Pastel Yellow Steel



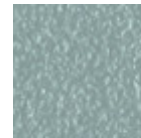
Ocher Steel



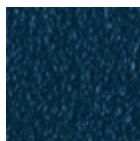
Red steel



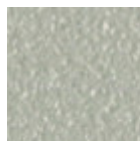
Sage Green Steel



Light blue steel



Ocean Blue Steel



Light Grey Steel



Facepowder Pink Steel



Chrome

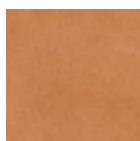


Pink Gold



Black Nickel

Coating



Tuscan Hide

3 Colors



TK Hide

9 Colors

Dimensions

Volumetric Details

Weight 11.5 Kg

Volume 0.37 mc

Package 1

Image not found or type unknown

	cm	inch
A	82	32.3
B	67	26.4
C	55	21.6
D	46	18.1
E	62	24.4

Downloads

.3ds Guapa P M CU (zip) - <https://www.midj.com/images/uploads/resources/3d-midj-guapa-p-m-cu-3ds.zip>

Materials Certifications

Tuscan Hide

Tuscan Hide does not fear to get aged since the oldest it gets the more unique it becomes.

It is a material deriving from animal's leather which suffer a process called "vegetable tanning" with natural tannins and with the help of some products biologically compatible whether for the dyeing or for the finishing.

Any possible imperfection, sign, scar, stain of the Tuscan hide surface are a natural characteristics which guarantees its originality.

Materials Certifications

TK Hide

PROPRIETIES AND ADVANTAGES

The hide is a hygienic and very practical product: it resists to wear, it's impermeable to water but, at the same time, the hide wicks air and sweat. The hide is obtained from the skin of bovines breeds and slaughtered for food purposes and subsequently treated with chromium salts.

CLEANING INSTRUCTIONS

Use only a damp, non abrasive cloth; do not use products containing solvents or alcohol that may damage the surface. It is advisable to test an invisible area of the product before cleaning it all. For good preservation of the product purchased, it is unadvisable to expose it to direct sunlight that may alter its features and colours. Any surface imperfections are natural features of hide and guarantee that it is an original product.



Guapa S M CU Chair

design Sempere#Poli Design, 2014

Chair with sled base and structure available in chrome, pink gold, black nickel or lacquered steel. Seat and backrest are in hide.



Colors and Materials

Structure



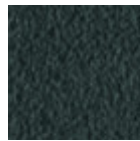
White Steel



Black Steel



Sand Steel

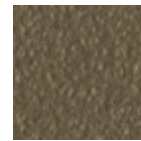


Grafite Steel



Industrial Steel

1 color



Fango Steel



Bronze Steel



Pastel Yellow Steel



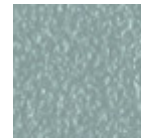
Ocher Steel



Red steel



Sage Green Steel



Light blue steel



Ocean Blue Steel



Light Grey Steel



Facepowder Pink Steel



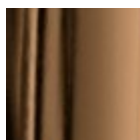
Chrome



Pink Gold

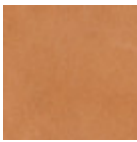


Black Nickel



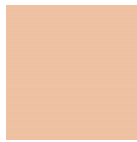
Golden Bronze

Coating



Tuscan Hide

3 Colors



TK Hide

9 Colors

Dimensions

Dimensions

Image not found or type unknown

	cm	inch
A	78	30.7
B	50	19.7
C	52	20.5
D	46	18.1

Volumetric Details

Weight 10 Kg

Volume 0.25 mc

Package 1

Downloads

[.3ds Guapa S M CU \(zip\)](https://www.midj.com/images/uploads/resources/3d-midj-guapa-s-m-cu-3ds.zip) - <https://www.midj.com/images/uploads/resources/3d-midj-guapa-s-m-cu-3ds.zip>

[.obj Guapa S M CU \(zip\)](https://www.midj.com/images/uploads/resources/3d-midj-guapa-s-m-cu-obj.zip) - <https://www.midj.com/images/uploads/resources/3d-midj-guapa-s-m-cu-obj.zip>

Materials Certifications

Tuscan Hide

Tuscan Hide does not fear to get aged since the oldest it gets the more unique it becomes.

It is a material deriving from animal's leather which suffer a process called "vegetable tanning" with natural tannins and with the help of some products biologically compatible whether for the dyeing or for the finishing.

Any possible imperfection, sign, scar, stain of the Tuscan hide surface are a natural characteristics which guarantees its originality.

Materials Certifications

TK Hide

PROPRIETIES AND ADVANTAGES

The hide is a hygienic and very practical product: it resists to wear, it's impermeable to water but, at the same time, the hide wicks air and sweat. The hide is obtained from the skin of bovines breeds and slaughtered for food purposes and subsequently treated with chromium salts.

CLEANING INSTRUCTIONS

Use only a damp, non abrasive cloth; do not use products containing solvents or alcohol that may damage the surface. It is advisable to test an invisible area of the product before cleaning it all. For good preservation of the product purchased, it is unadvisable to expose it to direct sunlight that may alter its features and colours. Any surface imperfections are natural features of hide and guarantee that it is an original product.



Guapa DNA M CU Armchair

design Sempere#Poli Design, 2014

Guapa rocking chair with high backrest and structure available in lacquered steel or chrome. Shell in hide characterized by a mesh effect.



Colors and Materials

Structure



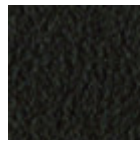
White Steel



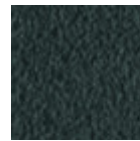
Black Steel



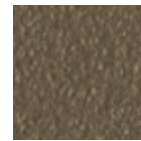
Sand Steel



Brown Steel



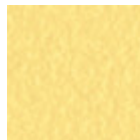
Grafite Steel



Fango Steel



Bronze Steel



Pastel Yellow Steel



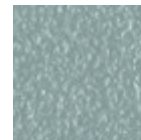
Ocher Steel



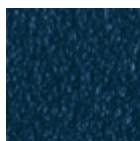
Red steel



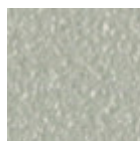
Sage Green Steel



Light blue steel



Ocean Blue Steel



Light Grey Steel

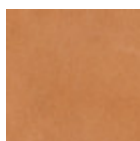


Facepowder Pink Steel



Chrome

Coating



Tuscan Hide

3 Colors



TK Hide

9 Colors

Dimensions

Volumetric Details

Weight 15 Kg

Volume 0.65 mc

Package 1

Image not found or type unknown

	cm	inch
A	97	38.2
B	69	27.2
C	86	33.9
D	44	17.3
E	62	24.4

Downloads

[.3ds Guapa DNA CU \(zip\)](https://www.midj.com/images/uploads/resources/3d-midj-guapa-dna-m-cu-3ds.zip) - <https://www.midj.com/images/uploads/resources/3d-midj-guapa-dna-m-cu-3ds.zip>

Materials Certifications

Tuscan Hide

Tuscan Hide does not fear to get aged since the oldest it gets the more unique it becomes.

It is a material deriving from animal's leather which suffer a process called "vegetable tanning" with natural tannins and with the help of some products biologically compatible whether for the dyeing or for the finishing.

Any possible imperfection, sign, scar, stain of the Tuscan hide surface are a natural characteristics which guarantees its originality.

Materials Certifications

TK Hide

PROPRIETIES AND ADVANTAGES

The hide is a hygienic and very practical product: it resists to wear, it's impermeable to water but, at the same time, the hide wicks air and sweat. The hide is obtained from the skin of bovines breeds and slaughtered for food purposes and subsequently treated with chromium salts.

CLEANING INSTRUCTIONS

Use only a damp, non abrasive cloth; do not use products containing solvents or alcohol that may damage the surface. It is advisable to test an invisible area of the product before cleaning it all. For good preservation of the product purchased, it is advisable to expose it to direct sunlight that may alter its features and colours. Any surface imperfections are natural features of hide and guarantee that it is an original product.

Guapa DNB M CU Lounge Armchair

design Sempere#Poli Design, 2014

Rocking chair with low backrest, structure in lacquered steel or chrome.
Shell in hide characterized by a mesh effect.



Colors and Materials

Structure



White Steel



Black Steel



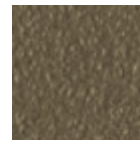
Sand Steel



Brown Steel



Grafite Steel



Fango Steel



Bronze Steel



Pastel Yellow Steel



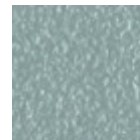
Ocher Steel



Red steel



Sage Green Steel



Light blue steel



Ocean Blue Steel



Light Grey Steel

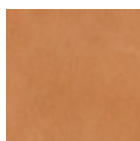


Facepowder Pink
Steel



Chrome

Coating



Tuscan Hide
3 Colors



TK Hide
9 Colors

Dimensions

Volumetric Details

Weight 13.5 Kg

Volume 0.49 mc

Package 1

Image not found or type unknown

	cm	inch
A	81	31.9
B	67	26.4
C	75	29.5
D	46	18.1
E	62	24.4

Downloads

[.3ds Guapa DNB CU \(zip\)](https://www.midj.com/images/uploads/resources/3d-midj-guapa-dnb-m-cu-3ds.zip) - <https://www.midj.com/images/uploads/resources/3d-midj-guapa-dnb-m-cu-3ds.zip>

Materials Certifications

Tuscan Hide

Tuscan Hide does not fear to get aged since the oldest it gets the more unique it becomes.

It is a material deriving from animal's leather which suffer a process called "vegetable tanning" with natural tannins and with the help of some products biologically compatible whether for the dyeing or for the finishing.

Any possible imperfection, sign, scar, stain of the Tuscan hide surface are a natural characteristics which guarantees its originality.

Materials Certifications

TK Hide

PROPRIETIES AND ADVANTAGES

The hide is a hygienic and very practical product: it resists to wear, it's impermeable to water but, at the same time, the hide wicks air and sweat. The hide is obtained from the skin of bovines breeds and slaughtered for food purposes and subsequently treated with chromium salts.

CLEANING INSTRUCTIONS

Use only a damp, non abrasive cloth; do not use products containing solvents or alcohol that may damage the surface. It is advisable to test an invisible area of the product before cleaning it all. For good preservation of the product purchased, it is unadvisable to expose it to direct sunlight that may alter its features and colours. Any surface imperfections are natural features of hide and guarantee that it is an original product.

Guapa P MX CU Armchair

design Sempere#Poli Design, 2014

Guapa swivel armchair with four ways trestle base in lacquered steel.
Shell in hide.



Colors and Materials

Structure



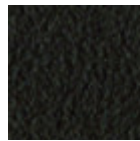
White Steel



Black Steel



Sand Steel



Brown Steel

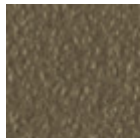


Grafite Steel



Industrial Steel

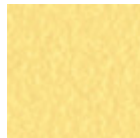
1 color



Fango Steel



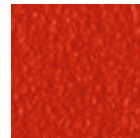
Bronze Steel



Pastel Yellow Steel



Ocher Steel



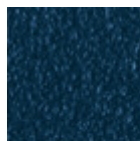
Red steel



Sage Green Steel



Light blue steel



Ocean Blue Steel

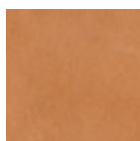


Light Grey Steel



Facepowder Pink Steel

Coating



Tuscan Hide

3 Colors



TK Hide

9 Colors

Dimensions

Volumetric Details

Weight 12 Kg

Volume 0.22 mc

Package 1

Image not found or type unknown

	cm	inch
A	83	32.7
B	67	26.4
C	55	21.7
D	47	18.5
E	62	24.4

Downloads

[.3ds Guapa P MX CU \(zip\)](https://www.midj.com/images/uploads/resources/3d-midj-guapa-p-mx-cu-3ds.zip) - <https://www.midj.com/images/uploads/resources/3d-midj-guapa-p-mx-cu-3ds.zip>

Materials Certifications

Tuscan Hide

Tuscan Hide does not fear to get aged since the oldest it gets the more unique it becomes.

It is a material deriving from animal's leather which suffer a process called "vegetable tanning" with natural tannins and with the help of some products biologically compatible whether for the dyeing or for the finishing.

Any possible imperfection, sign, scar, stain of the Tuscan hide surface are a natural characteristics which guarantees its originality.

Materials Certifications

TK Hide

PROPRIETIES AND ADVANTAGES

The hide is a hygienic and very practical product: it resists to wear, it's impermeable to water but, at the same time, the hide wicks air and sweat. The hide is obtained from the skin of bovines breeds and slaughtered for food purposes and subsequently treated with chromium salts.

CLEANING INSTRUCTIONS

Use only a damp, non abrasive cloth; do not use products containing solvents or alcohol that may damage the surface. It is advisable to test an invisible area of the product before cleaning it all. For good preservation of the product purchased, it is unadvisable to expose it to direct sunlight that may alter its features and colours. Any surface imperfections are natural features of hide and guarantee that it is an original product.

Guapa H65 Stool

design Sempere#Poli Design, 2014

Bar stool with sled base and footstool. Frame available in lacquered steel or in chrome. Shell in hide. Seat height: 65cm (25.6")

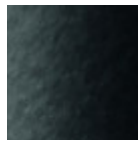


Colors and Materials

Structure



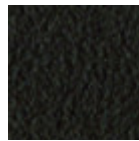
White Steel



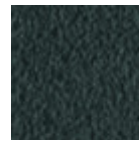
Black Steel



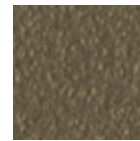
Sand Steel



Brown Steel



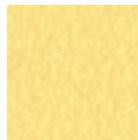
Grafite Steel



Fango Steel



Bronze Steel



Pastel Yellow Steel



Ocher Steel



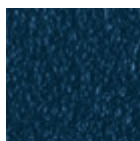
Red steel



Sage Green Steel



Light blue steel



Ocean Blue Steel



Light Grey Steel



Facepowder Pink Steel



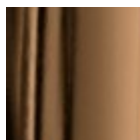
Chrome



Pink Gold

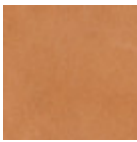


Black Nickel



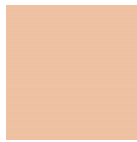
Golden Bronze

Coating



Tuscan Hide

3 Colors



TK Hide

9 Colors

Dimensions

Dimensions

Volumetric Details

Weight 11 Kg

Volume 0.31 mc

Package 1

Image not found or type unknown

	cm	inch
A	97	38.2
B	50	19.7
C	54	21.3
D	65	25.6

Downloads

[.3ds Guapa H65 \(zip\)](https://www.midj.com/images/uploads/resources/3d-midj-guapa-h65-m-cu-3ds.zip) - <https://www.midj.com/images/uploads/resources/3d-midj-guapa-h65-m-cu-3ds.zip>

Materials Certifications

Tuscan Hide

Tuscan Hide does not fear to get aged since the oldest it gets the more unique it becomes.

It is a material deriving from animal's leather which suffer a process called "vegetable tanning" with natural tannins and with the help of some products biologically compatible whether for the dyeing or for the finishing.

Any possible imperfection, sign, scar, stain of the Tuscan hide surface are a natural characteristics which guarantees its originality.

Materials Certifications

TK Hide

PROPRIETIES AND ADVANTAGES

The hide is a hygienic and very practical product: it resists to wear, it's impermeable to water but, at the same time, the hide wicks air and sweat. The hide is obtained from the skin of bovines breeds and slaughtered for food purposes and subsequently treated with chromium salts.

CLEANING INSTRUCTIONS

Use only a damp, non abrasive cloth; do not use products containing solvents or alcohol that may damage the surface. It is advisable to test an invisible area of the product before cleaning it all. For good preservation of the product purchased, it is unadvisable to expose it to direct sunlight that may alter its features and colours. Any surface imperfections are natural features of hide and guarantee that it is an original product.



Guapa H75 Stool

design Sempere#Poli Design, 2014

Bar stool with sled base and footstool. Frame available in chrome or lacquered steel. Shell in hide. Seat height: 75cm (29.5")



Colors and Materials

Structure



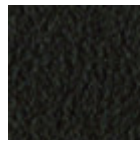
White Steel



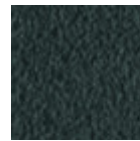
Black Steel



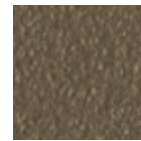
Sand Steel



Brown Steel



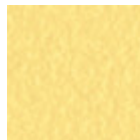
Grafite Steel



Fango Steel



Bronze Steel



Pastel Yellow Steel



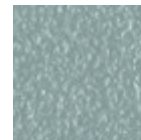
Ocher Steel



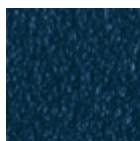
Red steel



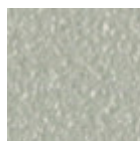
Sage Green Steel



Light blue steel



Ocean Blue Steel



Acier Gris Claire



Facepowder Pink Steel



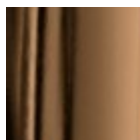
Chrome



Pink Gold

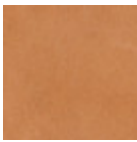


Black Nickel



Golden Bronze

Coating



Tuscan Hide

3 Colors



TK Hide

9 Colors

Dimensions

Dimensions

Image not found or type unknown

	cm	inch
A	107	42.1
B	50	19.7
C	54	21.3
D	75	29.5

Volumetric Details

Weight 11.5 Kg

Volume 0.34 mc

Package 1

Downloads

.3ds Guapa H75 (zip) - <https://www.midj.com/images/uploads/resources/3d-midj-guapa-h75-m-cu-3ds.zip>

Materials Certifications

Tuscan Hide

Tuscan Hide does not fear to get aged since the oldest it gets the more unique it becomes.

It is a material deriving from animal's leather which suffer a process called "vegetable tanning" with natural tannins and with the help of some products biologically compatible whether for the dyeing or for the finishing.

Any possible imperfection, sign, scar, stain of the Tuscan hide surface are a natural characteristics which guarantees its originality.

Materials Certifications

TK Hide

PROPRIETIES AND ADVANTAGES

The hide is a hygienic and very practical product: it resists to wear, it's impermeable to water but, at the same time, the hide wicks air and sweat. The hide is obtained from the skin of bovines breeds and slaughtered for food purposes and subsequently treated with chromium salts.

CLEANING INSTRUCTIONS

Use only a damp, non abrasive cloth; do not use products containing solvents or alcohol that may damage the surface. It is advisable to test an invisible area of the product before cleaning it all. For good preservation of the product purchased, it is unadvisable to expose it to direct sunlight that may alter its features and colours. Any surface imperfections are natural features of hide and guarantee that it is an original product.