



Apelle CT Coffee Table

design Beatriz Sempere, 2013

Apelle coffee table. Frame available in lacquered, chrome, black nickel or pink gold steel. Hide top.



Colors and Materials

Structure



White Steel



Black Steel



Sand Steel



Brown Steel



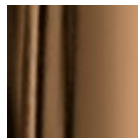
Grafite Steel



Pink Gold



Black Nickel

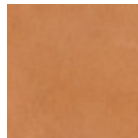


Golden Bronze

Coating



Hide
20 Colors



Tuscan Hide
3 Colors

Dimensions

Image not found or type unknown

Dimensions

	A (cm) (inch)	B (cm) (inch)	C (cm) (inch)
Apelle CT (cm) (inch)	49 19.3	39 15.4	37 14.6

Volumetric Details

Weight 7 Kg

Volume 0.09 mc

Package 1

Materials Certifications

Hide

FIRE RESISTANCE:

Technical Bulletin 117/00 sez E part. 1

EN 1021 parte 1/94, parte 2/94

BS 5852/90

PROPRIETIES AND ADVANTAGES

The hide is a hygienic and very practical product: it resists to wear, it's impermeable to water but, at the same time, the hide wicks air and sweat. The hide is obtained from the skin of bovines breeds and slaughtered for food purposes and subsequently treated with chromium salts.

CLEANING INSTRUCTIONS

Use only a damp, non abrasive cloth; do not use products containing solvents or alcohol that may damage the surface. It is advisable to test an invisible area of the product before cleaning it all. For good preservation of the product purchased, it is inadvisable to expose it to direct sunlight that may alter its features and colours. Any surface imperfections are natural features of hide and guarantee that it is an original product.

Materials Certifications

Tuscan Hide

Tuscan Hide does not fear to get aged since the oldest it gets the more unique it becomes.

It is a material deriving from animal's leather which suffer a process called "vegetable tanning" with natural tannins and with the help of some products biologically compatible whether for the dyeing or for the finishing.

Any possible imperfection, sign, scar, stain of the Tuscan hide surface are a natural characteristics which guarantees its originality.

Apelle Chic Coffee Table

design Beatriz Sempere, 2013

Apelle Chic coffee table with structure in lacquered steel, pink gold or black nickel. Top in ceramic or upholstered in hide.

Coffee table available in three different heights: h73 cm (28.7 in), h62 cm (24.4 in), h43 cm (16.9 in).

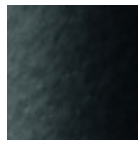


Colors and Materials

Structure



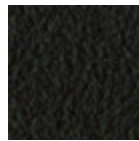
White Steel



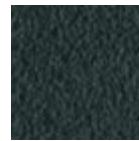
Black Steel



Sand Steel



Brown Steel



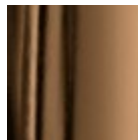
Grafite Steel



Pink Gold



Black Nickel

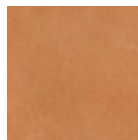


Golden Bronze

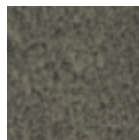
Coating



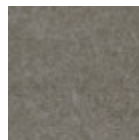
Hide
20 Colors



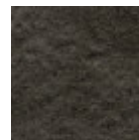
Tuscan Hide
3 Colors



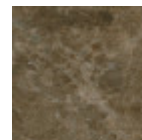
Lead Ceramic



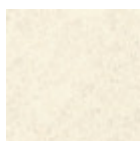
Cement Savoia
Ceramic



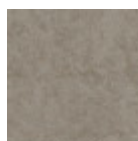
Charcoal Savoia
Ceramic



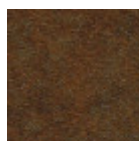
Emperador Marble
Ceramic



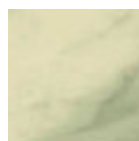
Oxide White Ceramic



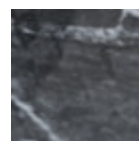
Oxide Sand Ceramic



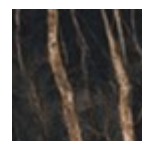
Corten Ceramic



Ceramic with effect
calacatta marble
1 color



Black greek glossy
marble ceramic



Noir desir glossy
ceramic marble



Venetian glossy ceramic

Dimensions

Dimensions

Volumetric Details

Weight 7,5 Kg

Volume 0,15 mc

Package 1

Image not found or type unknown

	A (cm) (inch)	B (cm) (inch)	C (cm) (inch)
H43 (cm) (inch)	43 16.9	42 16.5	40 15.7
H63 (cm) (inch)	63 24.8	45 17.7	40 15.7
H73 (cm) (inch)	73 28.7	47 18.5	42 16.5

Downloads

3D Autocad Apelle Chic H43 (zip) - <https://www.midj.com/images/uploads/resources/3d-midj-apelle-chic-h43-autocad.zip>

3ds Apelle Chic H43 (zip) - <https://www.midj.com/images/uploads/resources/3ds-midj-apelle-chic-h43.zip>

3D pCon Planner Apelle Chic H43 (zip) - <https://www.midj.com/images/uploads/resources/3d-midj-apelle-chic-h43-pcon.zip>

3D SketchUp Apelle Chic H43 (zip) - <https://www.midj.com/images/uploads/resources/3d-midj-apelle-chic-h43-sketchup.zip>

3D obj Apelle Chic H43 (zip) - <https://www.midj.com/images/uploads/resources/3d-midj-apelle-chic-h43-obj.zip>

3D Autocad Apelle Chic H63 (zip) - <https://www.midj.com/images/uploads/resources/3d-midj-apelle-chic-h63-autocad.zip>

3ds Apelle Chic H63 (zip) - <https://www.midj.com/images/uploads/resources/3ds-midj-apelle-chic-h63.zip>

3D pCon Planner Apelle Chic H63 (zip) - <https://www.midj.com/images/uploads/resources/3d-midj-apelle-chic-h63-pcon.zip>

3D SketchUp Apelle Chic H63 (zip) - <https://www.midj.com/images/uploads/resources/3d-midj-apelle-chic-h63-sketchup.zip>

3D obj Apelle Chic H63 (zip) - <https://www.midj.com/images/uploads/resources/3d-midj-apelle-chic-h63-obj.zip>

3D Autocad Apelle Chic H73 (zip) - <https://www.midj.com/images/uploads/resources/3d-midj-apelle-chic-h73-autocad.zip>

3ds Apelle Chic H73 (zip) - <https://www.midj.com/images/uploads/resources/3ds-midj-apelle-chic-h73.zip>

3D pCon Planner Apelle Chic H73 (zip) - <https://www.midj.com/images/uploads/resources/3d-midj-apelle-chic-h73-pcon.zip>

3D SketchUp Apelle Chic H73 (zip) - <https://www.midj.com/images/uploads/resources/3d-midj-apelle-chic-h73-sketchup.zip>

3D obj Apelle Chic H73 (zip) - <https://www.midj.com/images/uploads/resources/3d-midj-apelle-chic-h73-obj.zip>

Materials Certifications

Hide

FIRE RESISTANCE:

Technical Bulletin 117/00 sez E part. 1

EN 1021 parte 1/94, parte 2/94

BS 5852/90

PROPRIETIES AND ADVANTAGES

The hide is a hygienic and very practical product: it resists to wear, it's impermeable to water but, at the same time, the hide wicks air and sweat. The hide is obtained from the skin of bovines breeds and slaughtered for food purposes and subsequently treated with chromium salts.

CLEANING INSTRUCTIONS

Use only a damp, non abrasive cloth; do not use products containing solvents or alcohol that may damage the surface. It is advisable to test an invisible area of the product before cleaning it all. For good

preservation of the product purchased, it is inadvisable to expose it to direct sunlight that may alter its features and colours. Any surface imperfections are natural features of hide and guarantee that it is an original product.

Materials Certifications

Tuscan Hide

Tuscan Hide does not fear to get aged since the oldest it gets the more unique it becomes.

It is a material deriving from animal's leather which suffer a process called "vegetable tanning" with natural tannins and with the help of some products biologically compatible whether for the dyeing or for the finishing.

Any possible imperfection, sign, scar, stain of the Tuscan hide surface are a natural characteristics which guarantees its originality.



Apelle Trio Coffee Table

design Beatriz Sempere, 2013

Apelle Trio coffe table with structure in white, black lacquered steel, pink gold or black nickel. Tops in ceramic or upholstered in hide.

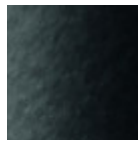


Colors and Materials

Structure



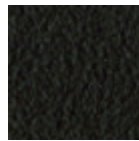
White Steel



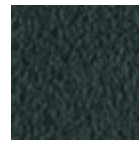
Black Steel



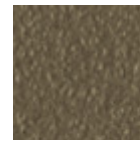
Sand Steel



Brown Steel



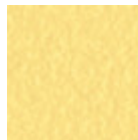
Grafite Steel



Fango Steel



Bronze Steel



Pastel Yellow Steel



Ocher Steel



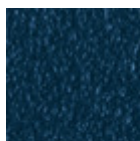
Red steel



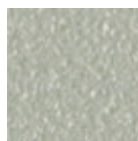
Sage Green Steel



Light blue steel



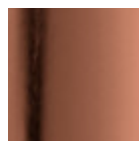
Ocean Blue Steel



Light Grey Steel



Facepowder Pink Steel



Pink Gold



Black Nickel

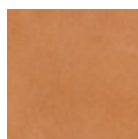


Golden Bronze

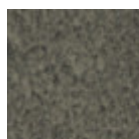
Coating



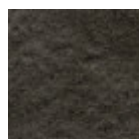
Hide
20 Colors



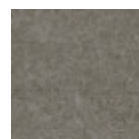
Tuscan Hide
3 Colors



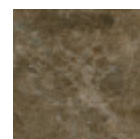
Lead Ceramic



Charcoal Savoia Ceramic



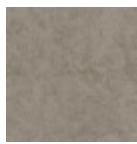
Cement Savoia Ceramic



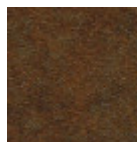
Emperador Marble Ceramic



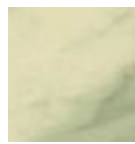
Oxide White Ceramic



Oxide Sand Ceramic



Corten Ceramic

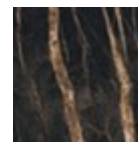


Ceramic with effect calacatta marble

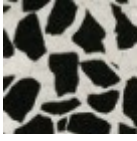
1 color



Black greek glossy marble ceramic



Noir desir glossy ceramic marble



Venetian glossy ceramic

Dimensions

Dimensions

Volumetric Details

Weight 15 Kg

Volume 0,25 mc

Package 1

Image not found or type unknown

	A (cm) (inch)	B (cm) (inch)	C (cm) (inch)
Apelle TRIO (cm)	55	71	62
(inch)	21.7	28	24.4

Downloads

3ds Apelle Trio (zip) - <https://www.midj.com/images/uploads/resources/3ds-midj-apelle-trio.zip>

Materials Certifications

Hide

FIRE RESISTANCE:

Technical Bulletin 117/00 sez E part. 1

EN 1021 parte 1/94, parte 2/94

BS 5852/90

PROPRIETIES AND ADVANTAGES

The hide is a hygienic and very practical product: it resists to wear, it's impermeable to water but, at the same time, the hide wicks air and sweat. The hide is obtained from the skin of bovines breeds and slaughtered for food purposes and subsequently treated with chromium salts.

CLEANING INSTRUCTIONS

Use only a damp, non abrasive cloth; do not use products containing solvents or alcohol that may damage the surface. It is advisable to test an invisible area of the product before cleaning it all. For good preservation of the product purchased, it is unadvisable to expose it to direct sunlight that may alter its features and colours. Any surface imperfections are natural features of hide and guarantee that it is an original product.

Materials Certifications

Tuscan Hide

Tuscan Hide does not fear to get aged since the oldest it gets the more unique it becomes.

It is a material deriving from animal's leather which suffer a process called "vegetable tanning" with

natural tannins and with the help of some products biologically compatible whether for the dyeing or for the finishing.
Any possible imperfection, sign, scar, stain of the Tuscan hide surface are a natural characteristics which guarantees its originality.