

MIDJ
INITALY

Apelle H65 M CU Stool

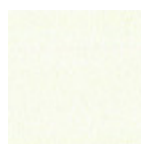
design Beatriz Sempere, 2013

Kind and soft lines give to Apelle stool an **essential and fresh** design.
For **kitchens and pubs**, suitable for fast brunches and pleasant breakfast.



Colors and Materials

Structure



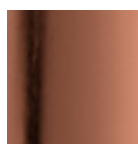
White Steel



Black Steel



Chrome



Pink Gold



Black Nickel

Coating



Hide

20 Colors

Dimensions

Image not found or type unknown

Dimensions

	cm	inch
A	91	35.8
B	51	20.1
C	51	20.1
D	65	25.6

Volumetric Details

Weight 8.5 Kg

Volume 0.29 mc

Package 1

Certifications

CATAS

CATAS
EN 1728:2012+AC:2013

Downloads

[Apelle catalog \(pdf\)](https://www.midj.com/images/uploads/resources/apelle-catalogo-2017.pdf) - <https://www.midj.com/images/uploads/resources/apelle-catalogo-2017.pdf>

[3D Autocad Apelle H65 M CU \(zip\)](https://www.midj.com/images/uploads/resources/3d-midj-apelle-h65-m-cu-autocad.zip) - <https://www.midj.com/images/uploads/resources/3d-midj-apelle-h65-m-cu-autocad.zip>

[3ds Apelle H65 M CU \(zip\)](https://www.midj.com/images/uploads/resources/3ds-midj-apelle-h65-m-cu.zip) - <https://www.midj.com/images/uploads/resources/3ds-midj-apelle-h65-m-cu.zip>

[3D pCon Planner Apelle H65 M CU \(zip\)](https://www.midj.com/images/uploads/resources/3d-midj-apelle-h65-m-cu-pcon.zip) - <https://www.midj.com/images/uploads/resources/3d-midj-apelle-h65-m-cu-pcon.zip>

Materials Certifications

Hide

FIRE RESISTANCE:

Technical Bulletin 117/00 sez E part. 1

EN 1021 parte 1/94, parte 2/94

BS 5852/90

PROPRIETIES AND ADVANTAGES

The hide is a hygienic and very practical product: it resists to wear, it's impermeable to water but, at the same time, the hide wicks air and sweat. The hide is obtained from the skin of bovines breeds and slaughtered for food purposes and subsequently treated with chromium salts.

CLEANING INSTRUCTIONS

Use only a damp, non abrasive cloth; do not use products containing solvents or alcohol that may damage the surface. It is advisable to test an invisible area of the product before cleaning it all. For good preservation of the product purchased, it is unadvisable to expose it to direct sunlight that may alter its features and colours. Any surface imperfections are natural features of hide and guarantee that it is an original product.



Apelle H75 M CU Stool

design Beatriz Sempere, 2013

Kind and soft lines give to Apelle stool an **essential and fresh** design.
For **kitchens and pubs**, suitable for fast brunches and pleasant breakfast.

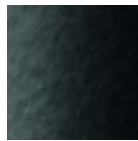


Colors and Materials

Structure



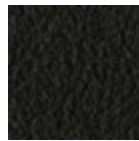
White Steel



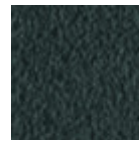
Black Steel



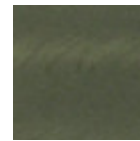
Sand Steel



Brown Steel

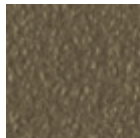


Grafite Steel



Industrial Steel

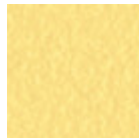
1 color



Fango Steel



Bronze Steel



Pastel Yellow Steel



Ocher Steel



Red steel



Sage Green Steel



Light blue steel



Ocean Blue Steel



Light Grey Steel



Facepowder Pink Steel



Chrome



Pink Gold

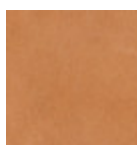


Black Nickel

Coating



Hide
20 Colors



Tuscan Hide
3 Colors

Dimensions

Dimensions

Image not found or type unknown

	cm	inch
A	101	39.8
B	51	20.1
C	51	20.1
D	75	29.5

Volumetric Details

Weight 9 Kg
Volume 0.31 mc
Package 1

Certifications

CATAS
CATAS
EN 1728:2012+AC:2013

Downloads

[Apelle catalog \(pdf\)](https://www.midj.com/images/uploads/resources/apelle-catalogo-2017.pdf) - <https://www.midj.com/images/uploads/resources/apelle-catalogo-2017.pdf>
[3D Autocad Apelle H75 M CU \(zip\)](https://www.midj.com/images/uploads/resources/3d-midj-apelle-h75-m-cu-autocad.zip) - <https://www.midj.com/images/uploads/resources/3d-midj-apelle-h75-m-cu-autocad.zip>
[3ds Apelle H75 M CU \(zip\)](https://www.midj.com/images/uploads/resources/3ds-midj-apelle-h75-m-cu.zip) - <https://www.midj.com/images/uploads/resources/3ds-midj-apelle-h75-m-cu.zip>
[3D pCon Planner Apelle H75 M CU \(zip\)](https://www.midj.com/images/uploads/resources/3d-midj-apelle-h75-m-cu-pcon.zip) - <https://www.midj.com/images/uploads/resources/3d-midj-apelle-h75-m-cu-pcon.zip>

Materials Certifications

Hide

FIRE RESISTANCE:
Technical Bulletin 117/00 sez E part. 1
EN 1021 parte 1/94, parte 2/94
BS 5852/90

PROPRIETIES AND ADVANTAGES

The hide is a hygienic and very practical product: it resists to wear, it's impermeable to water but, at the same time, the hide wicks air and sweat. The hide is obtained from the skin of bovines breeds and slaughtered for food purposes and subsequently treated with chromium salts.

CLEANING INSTRUCTIONS

Use only a damp, non abrasive cloth; do not use products containing solvents or alcohol that may damage the surface. It is advisable to test an invisible area of the product before cleaning it all. For good preservation of the product purchased, it is inadvisable to expose it to direct sunlight that may alter its features and colours. Any surface imperfections are natural features of hide and guarantee that it is an original product.

Materials Certifications

Tuscan Hide

Tuscan Hide does not fear to get aged since the oldest it gets the more unique it becomes. It is a material deriving from animal's leather which suffer a process called "vegetable tanning" with natural tannins and with the help of some products biologically compatible whether for the dyeing or for the finishing. Any possible imperfection, sign, scar, stain of the Tuscan hide surface are a natural characteristics which guarantees its originality.



Apelle Jump Stool

design Beatriz Sempere, 2013

Apelle jump stool available with structure in lacquered steel. Seat in hide, leather, ecoleather, fabric or coustumer fabric.

Stool available in three different heights: h75 cm (29.9 in), h65 cm (26 in), h45 cm (18.5 in).

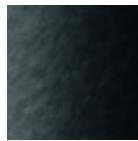


Colors and Materials

Structure



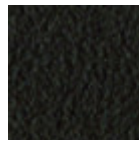
White Steel



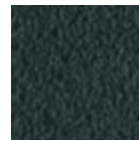
Black Steel



Sand Steel



Brown Steel

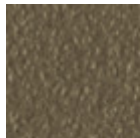


Grafite Steel



Industrial Steel

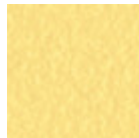
1 color



Fango Steel



Bronze Steel



Pastel Yellow Steel



Ocher Steel



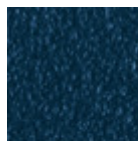
Red steel



Sage Green Steel



Light blue steel



Ocean Blue Steel



Facepowder Pink Steel



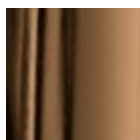
Light Grey Steel



Pink Gold



Black Nickel

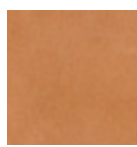


Golden Bronze

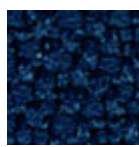
Coating



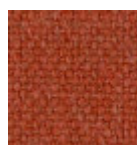
Hide
20 Colors



Tuscan Hide
3 Colors



Mirage Fabric
6 Colors



Cotton Club Fabric
13 Colors



Secret Faux Leather
22 Colors



Vintage Faux Leather
12 Colors



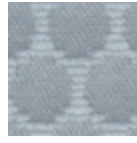
Fenix Wool Fabric
13 Colors



Carabù Fabric
15 Colors



Visual Fabric
11 Colors



Bubble Fabric
14 Colors



Hot Fabric
14 Colors



Main Line Flax Fabric
16 Colors



Scubidù Fabric
10 Colors



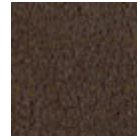
Second Fabric
11 Colors



Velvet Superb
15 Colors



Fiore Leather
18 Colors



Vintage Leather
4 Colors

Dimensions

Dimensions

Image not found or type unknown

	cm	inch
A	76/66/47	29.9/26/18.5
B	42/44/42	16.2/17.3/16.5
C	40/41/42	15.8/16.1/16.5

Volumetric Details

Weight 6 Kg
Volume 0.16 mc
Package 1

Downloads

- [Apelle catalog \(pdf\)](https://www.midj.com/images/uploads/resources/apelle-catalogo-2017.pdf) - <https://www.midj.com/images/uploads/resources/apelle-catalogo-2017.pdf>
- [3D Autocad Apelle Jump H75 \(zip\)](https://www.midj.com/images/uploads/resources/3d-midj-apelle-jump-h75-autocad.zip) - <https://www.midj.com/images/uploads/resources/3d-midj-apelle-jump-h75-autocad.zip>
- [3ds Apelle Hump H75 \(zip\)](https://www.midj.com/images/uploads/resources/3ds-midj-apelle-jump-h75.zip) - <https://www.midj.com/images/uploads/resources/3ds-midj-apelle-jump-h75.zip>
- [3D pCon Planner Apelle Jump H75 \(zip\)](https://www.midj.com/images/uploads/resources/3d-midj-apelle-jump-h75-pcon.zip) - <https://www.midj.com/images/uploads/resources/3d-midj-apelle-jump-h75-pcon.zip>
- [3D SketchUp Apelle Jump H75 \(zip\)](https://www.midj.com/images/uploads/resources/3d-midj-apelle-jump-h75-sketchup.zip) - <https://www.midj.com/images/uploads/resources/3d-midj-apelle-jump-h75-sketchup.zip>
- [3D obj Apelle Jump H75 \(zip\)](https://www.midj.com/images/uploads/resources/3d-midj-apelle-jump-h75-obj.zip) - <https://www.midj.com/images/uploads/resources/3d-midj-apelle-jump-h75-obj.zip>
- [3D Autocad Apelle Jump H65 \(zip\)](https://www.midj.com/images/uploads/resources/3d-midj-apelle-jump-h65-autocad.zip) - <https://www.midj.com/images/uploads/resources/3d-midj-apelle-jump-h65-autocad.zip>
- [3ds Apelle Hump H65 \(zip\)](https://www.midj.com/images/uploads/resources/3ds-midj-apelle-jump-h65.zip) - <https://www.midj.com/images/uploads/resources/3ds-midj-apelle-jump-h65.zip>
- [3D pCon Planner Apelle Jump H65 \(zip\)](https://www.midj.com/images/uploads/resources/3d-midj-apelle-jump-h65-pcon.zip) - <https://www.midj.com/images/uploads/resources/3d-midj-apelle-jump-h65-pcon.zip>
- [3D SketchUp Apelle Jump H65 \(zip\)](https://www.midj.com/images/uploads/resources/3d-midj-apelle-jump-h65-sketchup.zip) - <https://www.midj.com/images/uploads/resources/3d-midj-apelle-jump-h65-sketchup.zip>
- [3D obj Apelle Jump H65 \(zip\)](https://www.midj.com/images/uploads/resources/3d-midj-apelle-jump-h65-obj.zip) - <https://www.midj.com/images/uploads/resources/3d-midj-apelle-jump-h65-obj.zip>
- [3D Autocad Apelle Jump H45 \(zip\)](https://www.midj.com/images/uploads/resources/3d-midj-apelle-jump-h45-autocad.zip) - <https://www.midj.com/images/uploads/resources/3d-midj-apelle-jump-h45-autocad.zip>
- [3ds Apelle Hump H45 \(zip\)](https://www.midj.com/images/uploads/resources/3ds-midj-apelle-jump-h45.zip) - <https://www.midj.com/images/uploads/resources/3ds-midj-apelle-jump-h45.zip>
- [3D pCon Planner Apelle Jump H45 \(zip\)](https://www.midj.com/images/uploads/resources/3d-midj-apelle-jump-h45-pcon.zip) - <https://www.midj.com/images/uploads/resources/3d-midj-apelle-jump-h45-pcon.zip>
- [3D SketchUp Apelle Jump H45 \(zip\)](https://www.midj.com/images/uploads/resources/3d-midj-apelle-jump-h45-sketchup.zip) - <https://www.midj.com/images/uploads/resources/3d-midj-apelle-jump-h45-sketchup.zip>
- [3D obj Apelle Jump H45 \(zip\)](https://www.midj.com/images/uploads/resources/3d-midj-apelle-jump-h45-obj.zip) - <https://www.midj.com/images/uploads/resources/3d-midj-apelle-jump-h45-obj.zip>

Materials Certifications

Hide

FIRE RESISTANCE:

PROPRIETIES AND ADVANTAGES

The hide is a hygienic and very practical product: it resists to wear, it's impermeable to water but, at the same time, the hide wicks air and sweat. The hide is obtained from the skin of bovines breeds and slaughtered for food purposes and subsequently treated with chromium salts.

CLEANING INSTRUCTIONS

Use only a damp, non abrasive cloth; do not use products containing solvents or alcohol that may damage the surface. It is advisable to test an invisible area of the product before cleaning it all. For good preservation of the product purchased, it is unadvisable to expose it to direct sunlight that may alter its features and colours. Any surface imperfections are natural features of hide and guarantee that it is an original product.

Materials Certifications

Tuscan Hide

Tuscan Hide does not fear to get aged since the oldest it gets the more unique it becomes.

It is a material deriving from animal's leather which suffer a process called "vegetable tanning" with natural tannins and with the help of some products biologically compatible whether for the dyeing or for the finishing.

Any possible imperfection, sign, scar, stain of the Tuscan hide surface are a natural characteristics which guarantees its originality.

Materials Certifications

Mirage Fabric

Mantindale: 100.000 cycles
Composition: 100% Polyester
Shrinking about 1%

FIRE RESISTANCE

Classe 1IM
B1 DIN 4102
Q1 OENORM B3825
Q1 OENORM 3800 Part. 1
BS 5852 Crib 5
EN 1021 Part.1-2
Calif. Bull. 117
EN 13501 - 1 1,2 : B-s1 , d0
EN 13773 Burning Behaviour: class 1
EN ISO 6940/6941
Fire Protection Classification: 5.3
NF D 60-013:2006 AM18
FAR.25853 Classification: Yes

PROPRIETIES AND ADVANTAGES

Mirage is a two-way stretch fabric with crep armor, it is very resistant to abrasion and pilling. Mirage is equipped with the best certificates required for the resistance to fire.

CLEANING INSTRUCTIONS

We recommend to use a regular vacuum cleaner with plain tip, do not brush. For light stains, rub the surface gently with a damp cloth or use neutral fabric detergents. Leave to dry away from sunlight.

Materials Certifications

Cotton Club Fabric

COMPOSITION: 70 % COT; 10% PES; 10% ACR; 10% AF

WASHING

Dust gently and in case of light stains pass the surface with a damp cloth or a neutral detergent, rinse with water without squeezing. Let the fabric dry inside out avoiding direct exposure to the sunlight. Iron to the reverse at low temperature. The following instructions are recommended for small located and more obstinate stains

(oil, fat, cosmetics, ink, coffee, liquor, chewing-gum etc.): dissolve immediately with clear ethylic alcohol diluted in water to 20%, dab and then treat with a neutral detergent solution. Rinse abundantly.

GENERAL WARNINGS

To avoid permanent stains, the lighter colours of the article should not be brought into contact with textiles and clothing coloured with unfixed dyes. We cannot guarantee the ability to remove unknown dyes from light coloured product.

Slight color differences between a lot and the other are to be considered normal.

Materials Certifications

Secret Faux Leather

MARTINDALE: 60'000 cycles

COMPOSITION: 76% PVC - 2% PU 22% PES

FIRE RESISTANCE:

EN 1021-2:2006

UNI 9175 CLASSE 1 IM

BS5852-1:1979 part 1

TB 117:2013

PROPRIETIES AND ADVANTAGES

Secret is a fire retardant ecoleather totally made in Italy. It contains high resistant polymers of new conception more resistant to sun exposure and to use. Secret has been designed to realize soft interior upholstery: its elastic backing, made of polyester, allows it to adapt to the new geometries of upholstery with greater assurance of strength and durability.

CLEANING INSTRUCTIONS

Dust gently and in case of light stains pass the surface with a damp cloth or a neutral detergent, rinse with water without squeezing. Let the fabric dry inside out avoiding direct exposure to the sunlight. Iron to the reverse at low temperature. The following instructions are recommended for small located and more obstinate stains (oil, fat, cosmetics, ink, coffee, liquor, chewing-gum etc.): dissolve immediately with clear ethylic alcohol diluted in water to 20%, dab and then treat with a neutral detergent solution. Rinse abundantly. To avoid permanent stains, the lighter colours of the article should not be brought into contact with textiles and clothing coloured with unfixed dyes. We cannot guarantee the ability to remove unknown dyes from light coloured product.

Materials Certifications

Vintage Faux Leather

MARTINDALE: 50'000 cycles

COMPOSITION: 80% PVC; 2% PU; 18% PES

FIRE RESISTANCE:

UNI 9175: classe 1IM

EN 1021-2

PROPRIETIES AND ADVANTAGES

This faux leather's surface is made using a microscopic texture which makes it similar to natural leather to the touch while keeping the typical characteristics of technical fabric such as endurance and ease of use. The Vintage faux leather features a special mesh fabric construction, slightly elastic, that makes it easily adaptable to the new modern shapes of upholstered furniture and guarantees long life. Soft, enveloping and fire resistant, this fabric adapts to contract or residential spaces.

CLEANING INSTRUCTIONS

Dust gently and in case of light stains pass the surface with a damp cloth or a neutral detergent, rinse with water without squeezing. Let the fabric dry inside out avoiding direct exposure to the sunlight. Iron to the reverse at low temperature. The following instructions are recommended for small located and more obstinate stains (oil, fat, cosmetics, ink, coffee, liquor, chewing-gum etc.): dissolve immediately with clear ethylic alcohol diluted in water to 20%, dab and then treat with a neutral detergent solution. Rinse abundantly. To avoid permanent stains, the lighter colours of the article should not be brought into contact with textiles and clothing coloured with unfixed dyes. We cannot guarantee the ability to remove unknown dyes from light coloured product.

Materials Certifications

Fenix Wool Fabric

Martindale: 100.000 cycles
Composition: 75% wool; 25% Polyamide

FIRE RESISTANCE
CLASSE 1 IM,
EN 1021 Part 1-2,
Calif. Bull. 117

PROPRIETIES AND ADVANTAGES

The particular finish of the Fenix Wool fabric is obtained by a stabilization treatment which gives a particularly soft hand but very consistent, able to achieve excellent values of resistance to pilling and abrasion. This fabric is made from regenerated wool. The recycling allows the creation of fabrics even more varied and rich in composition with inimitable content of fantasy. The very contemporary color palette is coordinated harmoniously both for domestic and for the office sector. The fabric is produced entirely in Italy.

CLEANING INSTRUCTIONS

We recommend to use a regular vacuum cleaner with plain tip, do not brush. Dry cleaning is recommended. Some colorants used for garments or accessories (i.e. jeans) may stain pale colours of this product. This tendency increases in a damp, warm environment.

Materials Certifications

Carabù Fabric

COMPOSITION: 50% PES, 35% AC, 15% PA

MARTINDALE: 250.000 CYCLES

FIRE RESISTANCE:
BS 5852 1-2
EN 1021 1-2

PROPRIETIES AND ADVANTAGES:

This special fabric allows you to eliminate little stains of wine, coffee, food and some markers without having to resort to complete washing with detergent.

MAINTENANCE

Use periodically vacuum cleaner on the surface with a flat spout. In order to treat the stains, remove the excess residue left on the fabric by applying (directly or with an absorbent cloth) water on the stain; then rub gently on the fabric. If the stain does not disappear completely repeat the procedure as many times as necessary.

Slight color differences between a lot and the other are to be considered normal.

Materials Certifications

Bubble Fabric

MARTINDALE: 35'000 cycles

COMPOSITION: 100% PES

FIRE RESISTANCE:
BS5852:2006 (p. 11 CRIB 5)
EN1021-1
EN1021-2
UNI 9175:2010 - classe 1 im

PROPERTIES AND ADVANTAGES

Bubble is a polyester fabric entirely manufactured and tested in Italy which has been studied for the upholstered furniture sector. Made applying special technical finishings that reduce height and increase thickness of the geometrical shapes on the surface. This fabric is highly resistant and both its warp and

weft are 100% fireproof. Since it has successfully passed the most exacting reaction to fire tests, it can be used in the professional and hospitality/ contract settings. Bubble mixes together the elegance, the embracing materials and the prestige of traditional home fabrics with the resistance and the high technical performances typical of contract textile.

Slight color differences between a lot and the other are to be considered normal.

Materials Certifications

Hot Fabric

MARTINDALE: 45'000 cycles

COMPOSITION: 100% PES

FIRE RESISTANCE:

BS5852:2006 (p. 11 CRIB 5)

EN1021-1

EN1021-2

UNI 9175:2010 - 1 IM

PROPERTIES AND ADVANTAGES

Hot is a polyester fabric entirely manufactured and tested in Italy which has been studied for the upholstered furniture sector. Special dyeing methods are used to provide volume to Hot fabrics and make them extremely soft. This fabric is highly resistant and both its warp and weft are 100% fireproof. Since it has successfully passed the most exacting reaction to fire tests, it can be used in the professional and hospitality/ contract settings. Hot mixes together the elegance, the embracing materials and the prestige of traditional home fabrics with the resistance and the high technical performances typical of contract textile.

CLEANING INSTRUCTIONS

Pen: treat immediately using denatured colorless alcohol. Brush then using neutral detergent and put in washing-machine. Milk, butter and oil: absorb immediately using blotting paper. Brush then using neutral detergent and put in washing-machine. Drinks: rinse immediately with abundant water and neutral soap. Put then in washing-machine. Adhesives and chewingum: harden the stain using some ice, remove the residues, apply a lubricant solution and let it dry. If necessary, repeat the operation and put then in washingmachine. Food debris: brush with water and neutral soap or with alcohol diluted in water at 20%. Put then in washing-machine.

Slight color differences between a lot and the other are to be considered normal.

Materials Certifications

Main Line Flax Fabric

COMPOSITION: 70% Virgin Wool – 30% LI

MARTINDALE: 50.000 CYCLES

FIRE RESISTANCE:

EN 1021 Part.1-2

BS 5852 Crib 5

BS 7176 Low Hazard

BS 7176 Medium Hazard

UNI 9175 Classe 1IM

FEATURES:

Main Line Flax is a precious fabric that derives from the processing of natural fibers such as flax and wool. It is an intrinsically fireproof fabric, coming from sustainable sources. Flax is mixed with wool, then dyed, to create wonderful plays of color.

MAINTENANCE:

Use regularly the smooth spout vacuum cleaner , without brushing. The textile product cannot stand chlorine treatment. Dry at low temperatures. In case of stains, promptly intervene by dabbing with a damp and clean cloth or using specific products for upholstery.

Slight color differences between a lot and the other are to be considered normal.

Materials Certifications

Scubidù Fabric

COMPOSITION: 100% PL

MARTINDALE: 35.000 CYCLES

MAINTENANCE

Use regularly the smooth spout vacuum cleaner , without brushing. The textile product cannot stand chlorine treatment. Dry at low temperatures. In case of stains, promptly intervene by dabbing with a damp and clean cloth or using specific products for upholstery.

Slight color differences between a lot and the other are to be considered normal.

Materials Certifications

Second Fabric

Martindale 25.000 cycles

Composition: 70% VI - 30% LI

FIRE RESISTANCE:

Italy - Classe 1IM

EN 1021 Part.1-2

BS 5852 Crib 5

France - M1

USA Calif. Bull. 117 June 2013

IMO 307 (88) Part.8

FEATURES

100% consisted of natural fibers. It does not contain chemical additives nor fire-resistant agents. It does not contain formaldehyde nor chlorine or bromine. It is biodegradable. It is resistant to temperatures above 1000°.

MAINTENANCE

Use regularly the smooth spout vacuum cleaner , without brushing. The textile product cannot stand chlorine treatment. Dry at low temperatures.

Slight color differences between a lot and the other are to be considered normal.

Materials Certifications

Velvet Superb

MARTINDALE: 60'000 cycles

COMPOSITION: 100% PES FR

FIRE RESISTANCE:

EN 1021-1

EN 1021-2

UNI 9175 CLASSE 1 IM

UNI 9177 CLASSE 1 IM

BS 5852 – CRIB 5

NF 92.503 – M1

DIN 4102 – B1

PROPRIETIES AND ADVANTAGES

Superb, it's the velvet from lively and bright colours. Superb is soft yet lasting, resistant to wear, suitable for both public settings and home. Superb is a timeless velvet; it adapts to every style no matter if classic or modern. It is fireproof and easy to maintain. Superb can be used to make armchairs, sofas, chairs, upholstered furniture or obtain their type approval under the different regulations around the world.

CLEANING INSTRUCTIONS

PEN: Treat immediately using denaturated colorless alcohol. Brush then using neutral detergent and rinse. MILK, BUTTER AND OIL: Absorb immediately using blotting paper. Brush then using neutral detergent and rinse. DRINKS: Rinse immediately with abundant water and neutral soap. ADHESIVE AND

CHEWINGUM: harden the stain using some ice, remove the residues, apply a lubricant solution and let it dry. If necessary repeat the operation. FOOD DEBRIS: brush with water and neutral soap or with alcohol diluted in water at 20%.

Slight color differences between a lot and the other are to be considered normal.

Materials Certifications

Fiore Leather

COMPOSITION: 100% pelle

FIRE RESISTANCE:

BS 5852:1979

BS EN 1021-1-2:2006

PROPRIETIES AND ADVANTAGES

The Fiore leather is a bovine leather of european origin, corrected and embossed for enhanced grain consistency. Finished using water based system. This product has a pigmented and protective top coat, with a soft handle and a silky matt finish.

CLEANING INSTRUCTIONS

Grain leather offers the benefit of improving in the course of time and with wear, both in terms of softness and sheen. To remove stains, it is advisable to rub the affected area with a clean, soft cloth or use a solution of water and a little neutral soap that must be applied gently onto the stain using a damp cloth. Rinse thoroughly and leave to dry away from direct sunlight.

Materials Certifications

Vintage Leather

Our Vintage Leather is a natural product, therefore the signs and imperfections on its surface, such as wrinkles, veins, scars and scratches as well as color differences are not to be considered defects but typical characteristics that enhance the beauty of the real leather and distinguish it from synthetic leather and other artificial products.

MARTINDALE: 50.000 cycles

PROPRIETIES AND ADVANTAGES

This leather with a distressed effect comes from Bovine of European origin. This high quality article is obtained starting with nubuck leather, which is slightly levelled with aniline and hand rubbed to give an aged effect. It has a very warm and silky feel.

CLEANING INSTRUCTIONS

Vintage leather offers the benefit of improving in the course of time and with wear, both in terms of softness and sheen. Remove stains with a damp cloth and leave to dry away from sunlight. Do not use chemical detergents.

Slight color differences between a lot and the other are to be considered normal.



Apelle P M CU Armchair

design Beatriz Sempere, 2013

When the line between home and office becomes thin, arises the need to decorate the **life/work** rooms with intelligent design product, combining **functionality** and **comfort**. Apelle conquers modern **offices**, **waiting rooms** and **restaurants** giving a touch of style and lightheartedness that everyone is looking for.

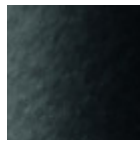


Colors and Materials

Structure



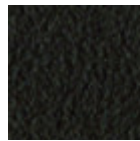
White Steel



Black Steel



Sand Steel



Brown Steel

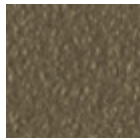


Grafite Steel



Industrial Steel

1 color



Fango Steel



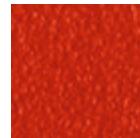
Bronze Steel



Pastel Yellow Steel



Ocher Steel



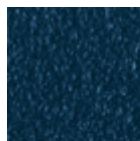
Red steel



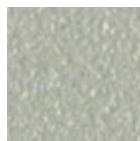
Sage Green Steel



Light blue steel



Ocean Blue Steel



Light Grey Steel



Facepowder Pink Steel



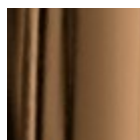
Chrome



Pink Gold



Black Nickel

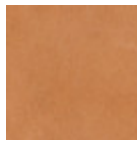


Golden Bronze

Coating



Hide
20 Colors



Tuscan Hide
3 Colors

Dimensions

Dimensions

Image not found or type unknown

	cm	inch
A	80	31.5
B	59	23.2
C	54	21.3
D	46	18.1
E	60/67	23.6/26.4

Volumetric Details

Weight 9 Kg
Volume 0.30 mc
Package 1

Downloads

[Apelle catalog \(pdf\)](https://www.midj.com/images/uploads/resources/apelle-catalogo-2017.pdf) - <https://www.midj.com/images/uploads/resources/apelle-catalogo-2017.pdf>

[3ds Apelle P M CU \(zip\)](https://www.midj.com/images/uploads/resources/3ds-midj-apelle-p-m-cu.zip) - <https://www.midj.com/images/uploads/resources/3ds-midj-apelle-p-m-cu.zip>

[3D Autocad Apelle P M CU \(zip\)](https://www.midj.com/images/uploads/resources/3d-midj-apelle-p-m-cu-cad.zip) - <https://www.midj.com/images/uploads/resources/3d-midj-apelle-p-m-cu-cad.zip>

[3D pCon Planner Apelle P M CU \(zip\)](https://www.midj.com/images/uploads/resources/3d-midj-apelle-p-m-cu-pcon.zip) - <https://www.midj.com/images/uploads/resources/3d-midj-apelle-p-m-cu-pcon.zip>

Materials Certifications

Hide

FIRE RESISTANCE:

Technical Bulletin 117/00 sez E part. 1

EN 1021 parte 1/94, parte 2/94

BS 5852/90

PROPRIETIES AND ADVANTAGES

The hide is a hygienic and very practical product: it resists to wear, it's impermeable to water but, at the same time, the hide wicks air and sweat. The hide is obtained from the skin of bovines breeds and slaughtered for food purposes and subsequently treated with chromium salts.

CLEANING INSTRUCTIONS

Use only a damp, non abrasive cloth; do not use products containing solvents or alcohol that may damage the surface. It is advisable to test an invisible area of the product before cleaning it all. For good preservation of the product purchased, it is unadvisable to expose it to direct sunlight that may alter its features and colours. Any surface imperfections are natural features of hide and guarantee that it is an original product.

Materials Certifications

Tuscan Hide

Tuscan Hide does not fear to get aged since the oldest it gets the more unique it becomes.

It is a material deriving from animal's leather which suffer a process called "vegetable tanning" with natural tannins and with the help of some products biologically compatible whether for the dyeing or for the finishing.

Any possible imperfection, sign, scar, stain of the Tuscan hide surface are a natural characteristics which guarantees its originality.



Apelle S M CU Chair

design Beatriz Sempere, 2013

Apelle chair with sled base in lacquered steel. Seat and backrest in hide.



Colors and Materials

Structure



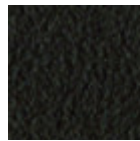
White Steel



Black Steel



Sand Steel



Brown Steel

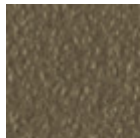


Grafite Steel



Industrial Steel

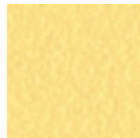
1 color



Fango Steel



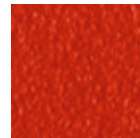
Bronze Steel



Pastel Yellow Steel



Ocher Steel



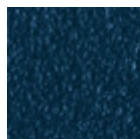
Red steel



Sage Green Steel



Light blue steel



Ocean Blue Steel



Light Grey Steel



Facepowder Pink Steel



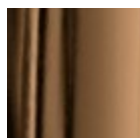
Chrome



Pink Gold

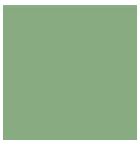


Black Nickel

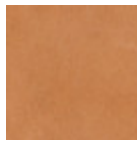


Golden Bronze

Coating



Hide
20 Colors



Tuscan Hide
3 Colors

Dimensions

Dimensions

Image not found or type unknown

	cm	inch
A	80	31.5
B	51	20.1
C	55	21.7
D	46	18.1

Volumetric Details

Weight 7 Kg
Volume 0.27 mc
Package 1

Certifications



Catas
EN 16139:2013 level L2
Extreme

Downloads

- [Apelle catalog \(pdf\)](https://www.midj.com/images/uploads/resources/apelle-catalogo-2017.pdf) - <https://www.midj.com/images/uploads/resources/apelle-catalogo-2017.pdf>
- [3ds Apelle S M CU \(zip\)](https://www.midj.com/images/uploads/resources/3ds-midj-apelle-s-m-cu.zip) - <https://www.midj.com/images/uploads/resources/3ds-midj-apelle-s-m-cu.zip>
- [3D pCon Planner Apelle S M CU \(zip\)](https://www.midj.com/images/uploads/resources/3d-midj-apelle-s-m-cu-pcon.zip) - <https://www.midj.com/images/uploads/resources/3d-midj-apelle-s-m-cu-pcon.zip>
- [3D Autocad Apelle S M CU \(zip\)](https://www.midj.com/images/uploads/resources/3d-midj-apelle-s-m-cu-cad.zip) - <https://www.midj.com/images/uploads/resources/3d-midj-apelle-s-m-cu-cad.zip>

Materials Certifications

Hide

FIRE RESISTANCE:
Technical Bulletin 117/00 sez E part. 1
EN 1021 parte 1/94, parte 2/94
BS 5852/90

PROPRIETIES AND ADVANTAGES

The hide is a hygienic and very practical product: it resists to wear, it's impermeable to water but, at the same time, the hide wicks air and sweat. The hide is obtained from the skin of bovines breeds and slaughtered for food purposes and subsequently treated with chromium salts.

CLEANING INSTRUCTIONS

Use only a damp, non abrasive cloth; do not use products containing solvents or alcohol that may damage the surface. It is advisable to test an invisible area of the product before cleaning it all. For good preservation of the product purchased, it is inadvisable to expose it to direct sunlight that may alter its features and colours. Any surface imperfections are natural features of hide and guarantee that it is an original product.

Materials Certifications

Tuscan Hide

Tuscan Hide does not fear to get aged since the oldest it gets the more unique it becomes. It is a material deriving from animal's leather which suffer a process called "vegetable tanning" with natural tannins and with the help of some products biologically compatible whether for the dyeing or for the finishing. Any possible imperfection, sign, scar, stain of the Tuscan hide surface are a natural characteristics which guarantees its originality.