

**Standard equipment:**

Synchro-mechanism S1 with lateral tension adjustment. Height adjustable backrest. Seat depth adjustment. Plastic base black with hard double wheel castors. Seat height adjustment with gas spring. **Only in fabric Bondai.**

**Attention: S24 = 24 hours version**, with seat depth adjustment and seat angle adjustment. Aluminum base polished.

Special gas lift. Armrests type XP3. Hard or soft castors.

**Only available in fabrics Supero and Extremo.**

Version bicolor (extra charge): Front side of seat and backrest in price group 4 Extremo, back side of backrest and seat sides in artificial leather Pronto black. Complete warranty: 2 years.



## 4010 S1

Standard equipment  
with armrests type XP3

vol. cbm	measures cm	fabric req. running m	weight kg
	H 98-117	1,5	22
	B 65	x	
	ST 42-47	140 cm	
	SH 42-54	width	
	SB 47		
	LH 48-55		
	LB 46,5		

## 4010 S24

with armrests type XP3



## 4015 S1

Standard equipment  
with armrests type XP3

vol. cbm	measures cm	fabric req. running m	weight kg
	H 103-123	1,7	22,5
	B 65	x	
	ST 42-47	140 cm	
	SH 42-54	width	
	SB 47		
	LH 53-60		
	LB 46,5		

## 4015 S24

with armrests type XP3

**Accessories:**

Armrests type XP3: multifunctional armrests, height and width adjustable with soft PU arm tops

Armrests type XP2: multifunctional armrests, height, width and depth adjustable, swivelling, with soft PU arm tops, with plastic armrest connector

Armrests type XP4: multifunctional armrests, height, width and depth adjustable, swivelling, with soft PU arm tops, with polished aluminium armrest connector

AIR PLUS, depth adjustable lumbar support (only with S1)

Backrest cushion in different fabric

Bicolor version (only with S24)

Shorter seat (39 - 44 cm)

Height adjustment with shock absorbing system (only with S1)

Height adjustment with increased seat height + 5 cm (only with S1)

Soft double wheel castors, additional charge per chair

Universal wheels with chrome ring

Aluminum base polished or silver

**Standard equipment:**

Synchro-mechanism S1 with lateral tension adjustment. Height adjustable backrest. Seat depth adjustment. Plastic base black with hard double wheel castors. Seat height adjustment with gas spring. **Only in fabric Bondai.**

**Attention: S24 = 24 hours version**, with seat depth adjustment and seat angle adjustment. Aluminum base polished. Special gas lift. Armrests type XP3. Hard or soft castors.

**Only available in fabrics Supero and Extremo.**

Version bicolor (extra charge): Front side of seat and backrest in price group 4 Extremo, back side of backrest and seat sides in artificial leather Pronto black. Backrest cushion 4030 S24 in leather Pronto black. Complete warranty: 2 years.



## 4020 S1

Standard equipment  
with armrests type XP3

## 4020 S24

with armrests type XP3

vol. cbm	measures cm	fabric req. running m	weight kg
H 109-129	1,8	23	
B 65	x		
ST 42-47	140 cm		
SH 42-54	width		
SB 47			
LH 61-68			
LB 46,5			



## 4030 S1

Standard equipment  
with armrests type XP3

## 4030 S24

with armrests type XP3

vol. cbm	measures cm	fabric req. running m	weight kg
H 119-146	1,8	24	
B 65	x		
ST 42-47	140 cm		
SH 42-54	width		
SB 47			
LH 72-88			
LB 46,5			

**Accessories:**

Armrests type XP3: multifunctional armrests, height and width adjustable with soft PU arm tops

Armrests type XP2: multifunctional armrests, height, width and depth adjustable, swivelling, with soft PU arm tops, with plastic armrest connector

Armrests type XP4: multifunctional armrests, height, width and depth adjustable, swivelling, with soft PU arm tops, with polished aluminium armrest connector

AIR PLUS, depth adjustable lumbar support (only with S1)

Backrest cushion in different fabric

Bicolor version (only with S24)

Headrest for model 4030 in artificial leather black

Height adjustment with shock absorbing system (only with S1)

Height adjustment with increased seat height + 5 cm (only with S1)

Soft double wheel castors, additional charge per chair

Universal wheels with chrome ring

Aluminum base polished or silver

**Standard equipment:**

Synchro-mechanism S4 with lateral tension adjustment by use of a crank. Height adjustable backrest. Seat depth adjustment. Seat angle adjustment. Plastic base black with hard double wheel castors. Seat height adjustment with gas spring.

**Version Bicolor:**

Front side of seat and backrest in price group 2, fabric Atlantico. Back side of backrest and seat sides in artificial leather Pronto, all colors.

**Climate seat with Climatex fabric (fabric group 3, not available with armrests type 3).**

**Optional comfort seat cushion with pocket spring core.**



## 4010 S4

Standard equipment  
with armrests type XP3

with Climate seat

Comfort seat cushion

vol. cbm	measures cm	fabric req. running m	weight kg
	H 98-117	1,5	21
	B 65	x	
	ST 42-47	140 cm	
	SH 42-54	width	
	SB 47		
	LH 48-55		
	LB 46,5		



## 4015 S4

Standard equipment  
with armrests type XP3

with Climate seat

Comfort seat cushion

vol. cbm	measures cm	fabric req. running m	weight kg
	H 103-123	1,7	21,5
	B 65	x	
	ST 42-47	140 cm	
	SH 42-54	width	
	SB 47		
	LH 53-60		
	LB 46,5		

**Accessories:**

Armrests type XP3: multifunctional armrests, height and width adjustable with soft PU arm tops

Armrests type XP2: multifunctional armrests, height, width and depth adjustable, swivelling, with soft PU arm tops, with plastic armrest connector

Armrests type XP4: multifunctional armrests, height, width and depth adjustable, swivelling, with soft PU arm tops, with polished aluminium armrest connector

Conductive version, incl. Polished aluminum base, black or anthracite fabric

AIR PLUS, depth adjustable lumbar support

Height adjustment backrest easy top

Backrest cushion in different fabric

Bicolor version

Model AT (Automatic synchro-mechanism) (only with armrests type XP3)

Pad for model 4015 in artificial leather black

Shorter seat (39 - 44 cm)

Height adjustment with shock absorbing system

Height adjustment with increased seat height + 5 cm

Soft double wheel castors, additional charge per chair

Universal wheels with chrome ring

Aluminum base polished or silver

## SWIVEL CHAIRS / EXECUTIVE CHAIRS

### Standard equipment:

Comfort synchro-mechanism S4 with lateral weight adjustment by use of a crank. Height adjustable backrest. Seat depth adjustment. Seat angle adjustment. Plastic base black with hard double wheel castors. Seat height adjustment with gas spring.

### Version Bicolor:

Front side of seat and backrest in price group 2, fabric Atlantico. Back side of backrest and seat sides in artificial leather Pronto, all colors. Headrest: Artificial leather black (Sides of headrest artificial leather Pronto as backrest).

**Climate seat with Climatex fabric (fabric group 3, not available with armrests type 3).**

**Optional comfort seat cushion with pocket spring core.**



### 4020 S4

Standard equipment  
with armrests type XP3

with Climate seat

Comfort seat cushion

vol. cbm	measures cm	fabric req. running m	weight kg
	H 109-129	1,8	22
	B 65	x	
	ST 42-47	140 cm	
	SH 42-54	width	
	SB 47		
	LH 61-68		
	LB 46,5		



### 4030 S4

Standard equipment  
with armrests type XP3

with Climate seat

Comfort seat cushion

vol. cbm	measures cm	fabric req. running m	weight kg
	H 119-146	1,8	23
	B 65	x	
	ST 42-47	140 cm	
	SH 42-54	width	
	SB 47		
	LH 72-88		
	LB 46,5		

### Accessories:

Armrests type XP3: multifunctional armrests, height and width adjustable with soft PU arm tops

Armrests type XP2: multifunctional armrests, height, width and depth adjustable, swivelling, with soft PU arm tops, with plastic armrest connector

Armrests type XP4: multifunctional armrests, height, width and depth adjustable, swivelling, with soft PU arm tops, with polished aluminium armrest connector

Conductive version, incl. Polished aluminum base, black or anthracite fabric

AIR PLUS, depth adjustable lumbar support

Height adjustment backrest easy top

Backrest cushion in different fabric

Bicolor version

Model AT (Automatic synchro-mechanism) (only with armrests type XP3)

Headrest for model 4030 in artificial leather black (Price group 1-4)

Pad for model 4020 in artificial leather black

Height adjustment with shock absorbing system

Height adjustment with increased seat height + 5 cm

Soft double wheel castors, additional charge per chair

Universal wheels with chrome ring

Aluminum base polished or silver

**Standard equipment:**

Comfort synchro-mechanism with easy adjustment to body weight. Seat depth adjustment. Seat angle adjustment. ERGO BALANCE system (EB) integrated, optionally EB NEXT - lockable. Backrest height adjustment. Aluminum base polished with hard double wheel castors. Seat height adjustment with gas spring.

**Version Bicolor:**

Seat and front side of backrest in price group 2, fabric Atlantico. Back side of backrest and seat sides in artificial leather Pronto, all colors.

**Climate seat with Climatex fabric (fabric group 3, not available with armrests type 3).**

**Optional comfort seat cushion with pocket spring core.**



## 4010 EB

Standard equipment  
with armrests type XP3

with Climate seat

Comfort seat cushion

vol. cbm	measures cm	fabric req. running m	weight kg
	H 98-117	1,6	20
	B 65	x	
	ST 42-47	140 cm	
	SH 42-54	width	
	SB 47		
	LH 48-55		
	LB 46,5		



## 4015 EB

Standard equipment  
with armrests type XP3

with Climate seat

Comfort seat cushion

vol. cbm	measures cm	fabric req. running m	weight kg
	H 109-123	1,8	20,5
	B 65	x	
	ST 42-47	140 cm	
	SH 42-54	width	
	SB 47		
	LH 53-60		
	LB 46,5		

**Accessories:**

Armrests type XP3: multifunctional armrests, height and width adjustable with soft PU arm tops

Armrests type XP2: multifunctional armrests, height, width and depth adjustable, swivelling, with soft PU arm tops, with plastic armrest connector

Armrests type XP4: multifunctional armrests, height, width and depth adjustable, swivelling, with soft PU arm tops, with polished aluminium armrest connector

ERGO BALANCE NEXT (EB NEXT), system of rotational movement, lockable

ERGO BALANCE PLUS (EB PLUS), system of rotational movement, adjustable and lockable

AIR PLUS, depth adjustable lumbar support

Backrest cushion in different fabric

Bicolor version

Pad for model 4015 in artificial leather black

Shorter seat (39 - 44 cm)

Height adjustment with shock absorbing system (not with EB Plus)

Height adjustment with increased seat height + 5 cm (only with EB Plus)

Height adjustment with lower seating area - 3 cm (not with EB PLUS version)

Soft double wheel castors, additional charge per chair

Universal wheels with chrome ring

Aluminum base silver

**Standardausführung:**

Comfort synchro-mechanism with easy adjustment to body weight. Seat depth adjustment. Seat angle adjustment. ERGO BALANCE system (EB) integrated, optionally EB NEXT - lockable. Backrest height adjustment. Aluminum base polished with hard double wheel castors. Seat height adjustment with gas spring.

**Version Black & White:**

Seat and front side of backrest in price group 2-04 Atlantico black, back side of backrest and seat sides in 2-45 artificial leather white. Contrast stitching seams white/black. Design castors. Aluminum base powder coated black.

**Version Bicolor:**

Seat and front side of backrest in price group 2, fabric Atlantico. Back side of backrest and seat sides in artificial leather Pronto, all colors. Headrest 4030: Artificial leather black (Sides of backrest artificial leather Pronto as backrest).

**Climate seat with Climatex fabric (fabric group 3, not available with armrests type 3).**
**Optional comfort seat cushion with pocket spring core.**

**4020 EB**

Standard equipment  
with armrests type XP3

with Climate seat

Comfort seat cushion

vol. cbm	measures cm	fabric req. running m	weight kg
H 109-129	1,8		21
B 65	x		
ST 42-47	140 cm		
SH 42-54	width		
SB 47			
LH 61-68			
LB 46,5			


**4030 EB**

Price group acc. to fabric selection in €

Standard equipment  
with armrests type XP3

with Climate seat

Comfort seat cushion

vol. cbm	measures cm	fabric req. running m	weight kg
H 119-146	1,8		22
B 65	x		
ST 42-47	140 cm		
SH 42-54	width		
SB 47			
LH 72-88			
LB 46,5			

**Accessories:**

Armrests type XP3: multifunctional armrests, height and width adjustable with soft PU arm tops

Armrests type XP2: multifunctional armrests, height, width and depth adjustable, swivelling, with soft PU arm tops, with plastic armrest connector

Armrests type XP4: multifunctional armrests, height, width and depth adjustable, swivelling, with soft PU arm tops, with polished aluminium armrest connector

ERGO BALANCE NEXT (EB NEXT), system of rotational movement, lockable

ERGO BALANCE PLUS (EB PLUS), system of rotational movement, adjustable and lockable

AIR PLUS, depth adjustable lumbar support

Backrest cushion in different fabric

Bicolor version

Version Black & White

Headrest for model 4030 in artificial leather black (Price group 1-4)

Pad for model 4020 in artificial leather black

Height adjustment with shock absorbing system (not with EB PLUS)

Height adjustment with increased seat height + 5 cm (only with EB PLUS)

Height adjustment with lower seating area - 3 cm (not with EB PLUS version)

Soft double wheel castors, additional charge per chair

Universal wheels with chrome ring

Aluminum base silver

## SWIVEL CHAIRS / EXECUTIVE CHAIRS

### Standard equipment:

Synchro-mechanism S4 with lateral tension adjustment by use of a crank. Back with plastic shell, black. Seat depth adjustment. Seat angle adjustment. Plastic base black with hard double wheel castors. Seat height adjustment with gas spring. Easy top backrest height adjustment.

**Climate seat with Climatex fabric (fabric group 3, not available with armrests type 3).**

**Optional comfort seat cushion with pocket spring core.**

4045 S4	vol. cbm	measures cm	fabric req. running m	weight kg
Standard equipment with aluminum base with armrests type XP3		H 98-117 B 65 ST 42-47 SH 42-54	1,6 x 140 cm width	20
with Climate seat		SB 47 LH 48-55		
Comfort seat cushion		LB 46,5		



### Standard equipment:

Comfort synchro-mechanism with easy adjustment to body weight. Seat depth adjustment. Seat angle adjustment. ERGO BALANCE system (EB) integrated, optionally EB NEXT - lockable. Easy top backrest height adjustment. Aluminum base polished with hard double wheel castors. Seat height adjustment with gas spring.

**Climate seat with Climatex fabric (fabric group 3, not available with armrests type 3).**

**Optional comfort seat cushion with pocket spring core.**

4045 EB	vol. cbm	measures cm	fabric req. running m	weight kg
Standard equipment with armrests type XP3		H 98-117 B 65 ST 42-47 SH 42-54	1,6 x 140 cm width	20
with Climate seat		SB 47 LH 48-55		
Comfort seat cushion		LB 46,5		



### Accessories:

Armrests type XP3: multifunctional armrests, height and width adjustable with soft PU arm tops

Armrests type XP2: multifunctional armrests, height, width and depth adjustable, swivelling, with soft PU arm tops, with plastic armrest connector

Armrests type XP4: multifunctional armrests, height, width and depth adjustable, swivelling, with soft PU arm tops, with polished aluminium armrest connector

ERGO BALANCE NEXT (EB NEXT), system of rotational movement, lockable

ERGO BALANCE PLUS (EB PLUS), system of rotational movement, adjustable and lockable

AIR PLUS, depth adjustable lumbar support

Backrest cushion in different fabric

Pad for model 4020 in artificial leather black

Shorter seat (39-44cm)

Height adjustment with shock absorbing system (not with EB PLUS)

Height adjustment with increased seat height + 5 cm (only with EB PLUS)

Height adjustment with lower seating area - 3 cm (not with EB PLUS version)

Soft double wheel castors, additional charge per chair

Universal wheels with chrome ring

Aluminum base silver (4045 EB)

**Standard equipment:**

Steel tube frame powder coated, stackable. Cantilever frame without gliders for carpet flooring. 4-legged chair with plastic gliders. Arm tops PU. Frame color black.


**4410 A**

Standard equipment

**4410**

Standard equipment  
(without armrests)

549

vol. cbm	measures cm	fabric req. running m	weight kg
	H 90	1,40	9,5
	B 57,5	x	
	ST 44	140 cm	
	SH 44	width	
	SB 47		
	LH 47		
	LB 47		


**4415 A**

Standard equipment

vol. cbm	measures cm	fabric req. running m	weight kg
	H 97	1,55	10
	B 57,5	x	
	ST 44	140 cm	
	SH 44	width	
	SB 47		
	LH 54		
	LB 47		


**4110 A**

Standard equipment

vol. cbm	measures cm	fabric req. running m	weight kg
	H 92	1,40	9
	B 57,5	x	
	ST 47	140 cm	
	SH 45	width	
	SB 46		
	LH 47		
	LB 47		

**Accessories:**

Chromium version

Frame silver

Backrest in different fabric

Plastic gliders for models 4410 A, 4410, 4415 A

Felt gliders

Armrests in leather



**Standard equipment:**

Steel tube frame powder coated, stackable. Cantilever frame without gliders for carpet flooring. Arm tops PU.  
Frame color black.

**4405 A**

Standard equipment

vol. cbm	measures cm	fabric req. running m	weight kg
	H 84	1,35	9,5
	B 57,5	x	
	ST 45	140 cm	
	SH 44	width	
	SB 47		
	LH 32		
	LB 44		

**Accessories:**

Chromium version

Frame silver

Backrest in different fabric

Plastic gliders

Felt gliders

Armrests in leather

# ...XP

## S4 mechanism

...for good seating comfort

① **Dynamical backrest**

- infinitely height adjustable and blockable

② **Anatomically contoured upholstery**

- for a good seating comfort

③ **AIR PLUS**

- depth adjustable lumbar support (optional)

④ **Multifunctional armrests (optional)**

- height- and width adjustable (type 3)

⑤ **Synchronized mechanism**

- 6-fold adjustable with large opening angle of seat and backrest

⑥ **Seat height adjustment**

- infinitely

⑦ **Tension control**

- laterally adjustable to suit bodyweight

⑧ **Seat depth adjustment**

- sliding seat

⑨ **Seat angle adjustment**

⑩ **Design five star base**

- injected plastic version black (standard)  
- aluminium polished or silver version (optional)

⑪ **Locking dual wheel castors**

- for soft flooring (standard)  
- for hard flooring (optional)



ROVO XP  
4020 S4

# ROVO

GENERATES ENERGY

[www.rovo.de](http://www.rovo.de)



**ROVO XP 4010 S4**

Swivel chair with high back, plastic base black.



**ROVO XP 4010 S4**

Swivel chair with high back, aluminum base silver, multifunctional armrests type 3.



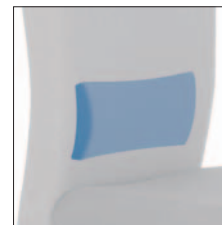
**ROVO XP 4030 S4**

Swivel chair with extra high backrest, headrest, aluminium base polished and multifunctional armrests type 3, AIR PLUS.



**ROVO XP 4405 A**

Cantilever chair, stackable, chrome frame (surcharge).

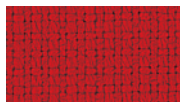


**Lumbar Support AIR PLUS:**

AIR PLUS is the orthopaedic air cushion lumbar support system that can be individually adjusted. The chair becomes like custom-made and supports a healthy sitting posture and prevents back problems.

**Hard-wearing fabrics, e.g. price group 3 wool**

Colour examples: Seat and back can be two-coloured in price group 3.



**3-60** rot



**3-61** blau



**3-62** dunkelblau



**3-63** anthrazit



**3-64** schwarz

**EN**

Try it out – at a dealer near you: